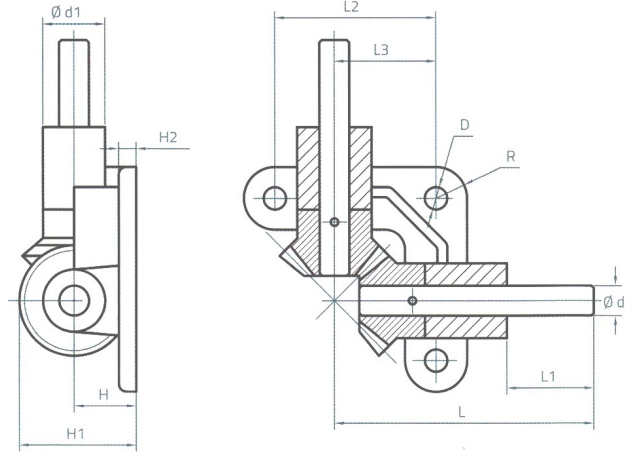
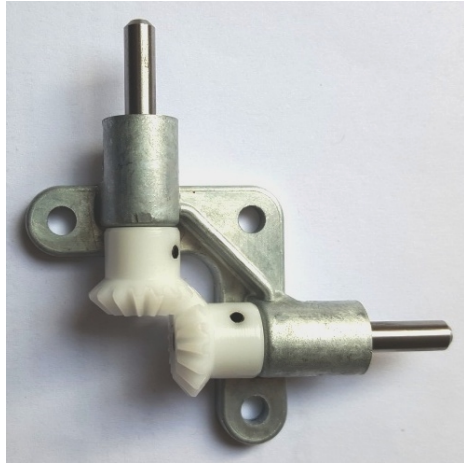


**MINIATURE OPEN BEVEL GEARBOX UNIT. PART NO: 919D35**



DIMENSIONS	d	L	L1	L2	L3	D	R	H	H1	H2	d1
Millimeter	5	50	15	32	19.4	4.8	6	10	18.8	4	12

This unit has particularly useful applications in situations where dust and debris are absent, in-line configuration is not possible and accessibility is a premium design consideration. It consists of a robust diecast zinc chassis/frame housing, 5mm dia steel C45 shafts and POM/Acetal self-lubricating gears at 1:1 ratio. A generous length of input shaft is provided allowing for a variety of drive motors to be considered. A triangular mounting hole configuration offers strength and stability in operation.

Polyketone gear version is available (Providing high resistant chemical/abrasion properties).

1:1 gear ratio      Lubricated for life      Designed for rugged service life

SPECIFICATION:      Weight:      60g      Torque:      846 g.cm

**IN-LINE COUPLINGS**



5 - 5mm      Part No. 919D1/5

5 - 6mm      Part No. 919D1/3